

# Models/Modelos/Modèles

25775-MPU-DST

Series/Series/Seria



**RP100362▲**  
Lever Handle Assembly (Hot)  
Ensamble de palanca (Caliente)  
Manette levier (eau chaude)

**RP60352**  
Bonnet Nuts (2)  
Bonetes/Capuchones (2)  
Chapeaux Filetés (2)

**RP60400**  
Valve Assembly (2)  
Ensamble de la Válvula (2)  
Soupape (2)

**RP100361▲**  
Lift Rod & Finial  
Barra de Alzar y Pomo  
Tige de Manoeuvre et  
Grain de la Tirette

**RP70933-1.2**  
Aerator & Wrench  
Aereador y Llave  
Aérateur et Clé

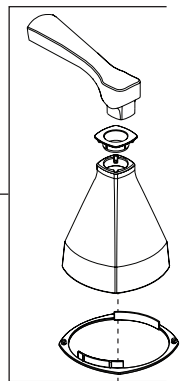
**RP63263**  
Adapters (Not Included)  
3/8"-24 UNEF to 1/2"-20 UN &  
3/8"-24 UNEF to 1/2"-14 NPSM

Adaptadores (No incluido)  
3/8"-24 UNEF to 1/2"-20 UN &  
3/8"-24 UNEF to 1/2"-14 NPSM

Adaptateurs (non inclus)  
3/8 po-24 UNEF to 1/2 po-20 UN et  
3/8 po-24 UNEF to 1/2 po-14 NPSM

**RP50952**  
Plastic Sleeves  
Mangas Plásticas  
Manchons en plastique

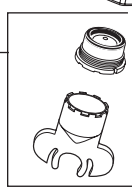
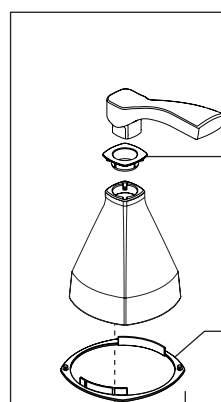
**RP51243**  
Gaskets (2)  
Empaques (2)  
Joints (2)



**RP100363▲**  
Lever Handle Assembly (Cold)  
Ensamble de palanca (Fría)  
Manette levier (eau froide)

**RP100366 - Red/Blue**  
**RP100367BK - Black**  
**RP100367GR - Gray**  
Glide Rings (2)  
Anillos de deslizamiento (2)  
Anneaux glissants (2)

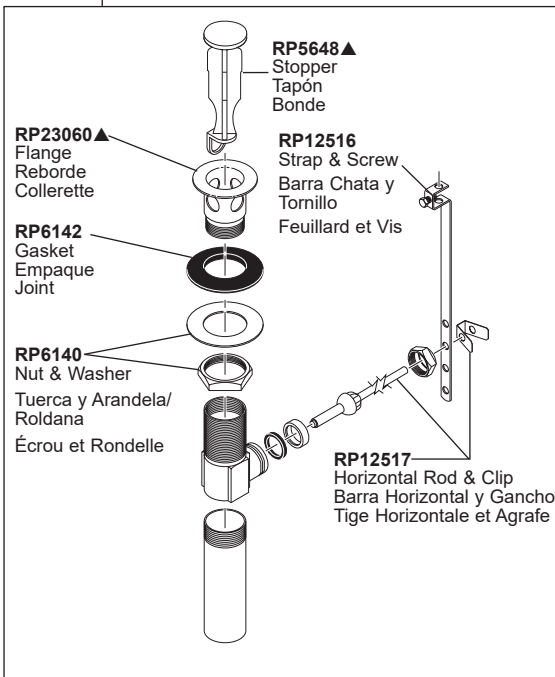
**RP100368BK - Black**  
**RP100368GR - Gray**  
Glide Rings (2)  
Anillos de deslizamiento (2)  
Anneaux glissants (2)



**RP73814**  
Gasket  
Empaque  
Joint

**RP53531**  
Locknuts  
Contratuercas  
Écrous de  
Blocage

**RP26533▲**  
Metal Pop-Up Assembly Less Lift Rod  
Ensamble de Metal del Desagüe Automático Sin la Barra de Alzar  
Renvoi Mécanique en Métal Sans la Tige de Manoeuvre



**RP5648▲**  
Stopper  
Tapón  
Bonde

**RP23060▲**  
Flange  
Reborde  
Collerette

**RP6142**  
Gasket  
Empaque  
Joint

**RP6140**  
Nut & Washer  
Tuerca y Arandela/  
Roldana  
Écrou et Rondelle

**RP12516**  
Strap & Screw  
Barra Chata y  
Tornillo  
Feuillard et Vis

**RP12517**  
Horizontal Rod & Clip  
Barra Horizontal y Gancho  
Tige Horizontale et Agrafe